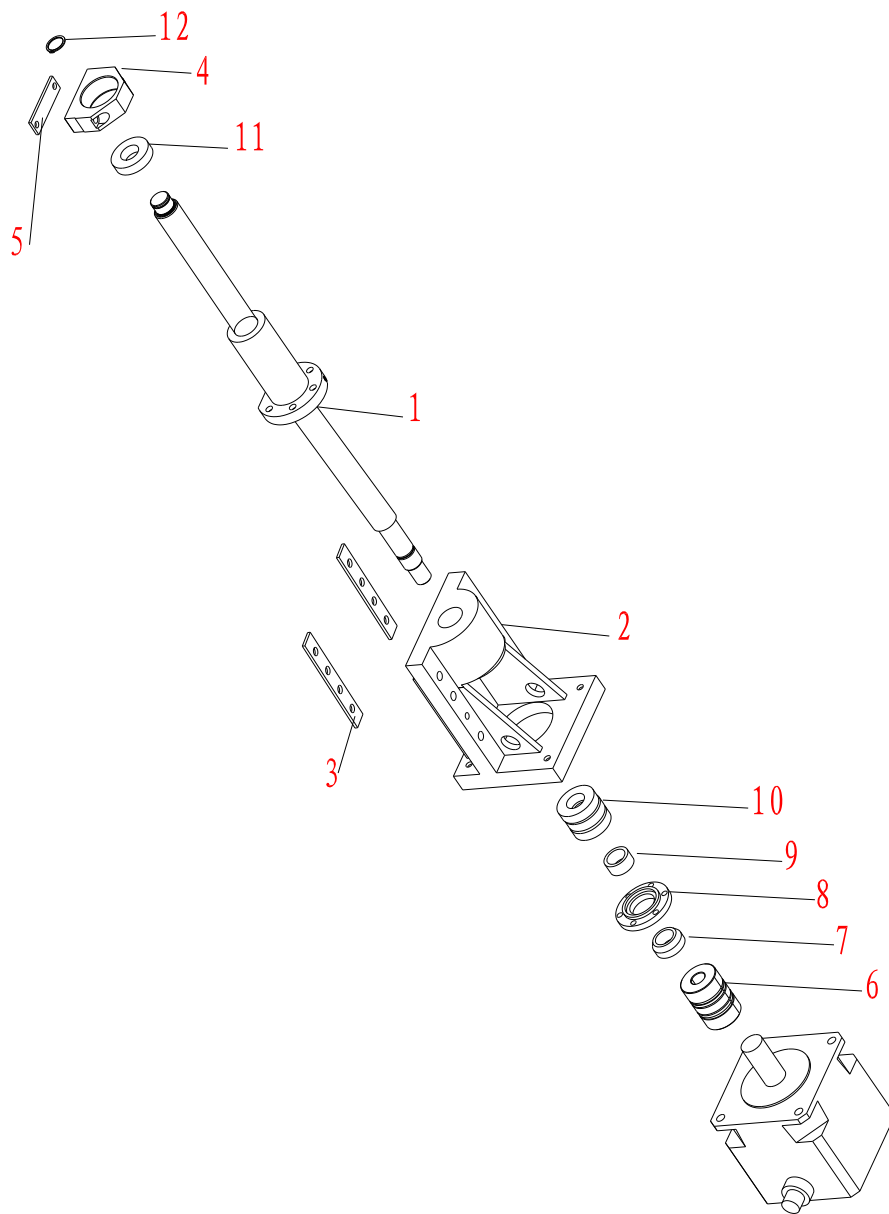


床身装配图
Bed assembly drawing

床身装配

Bed assembly

图上序号 Position No	件号 Part No	名称 Description	数量 Q'ty	备注 Remarks
1	71011	床身 Bed	1	
2	VMC850-71012	地脚垫 Base pad	6	
3	VMC850-71301	空心螺钉 Hollow screw	6	
4	VMC850-371302	直线导轨 Linear guideway	1	
5	VMC850-41301	压块 Hold-down	26	



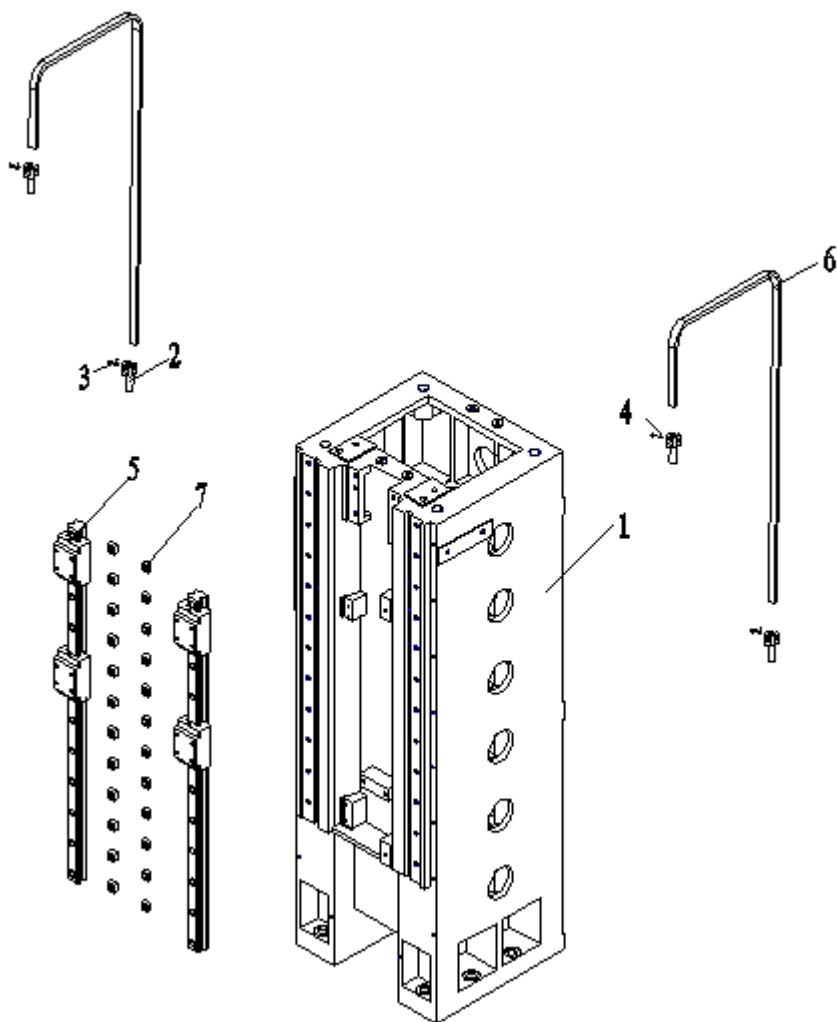
Y 轴 拖 动 装 配 图

Y axis driven assembly drawing

Y 轴 拖 动 装 配

Y axis driven assembly

图上序号 Position No	件号 Part No	名 称 Description	数 量 Q'ty	备 注 Remarks
1	72301A	丝 杠 Ball screw	1	PMI
2	VMC850E-72011A	电 机 座 Motor seat	1	
3	VMC850E-42304	调 整 垫 Adjusting pad	2	
4	VMC850-42012	轴 承 座 Bearing seat	1	
5	VMC850-42307	调 整 垫 Adjusting pad	1	
6	RJ/28/28/90 (D25 -D35)	联 轴 器 coupling	1	
7	SWLN06-M30X1.5	螺 帽 Screw cap	1	YHB
8	VMC850E-42302	压 盖 gland	1	
9	VMC850E-42303	套 sleeve	1	
10	BST30X62-1BP4	高精度径向推力球轴 承 High precision angular ball bearing	3	NTN
11	6206ZZCM	单列深沟球轴 承 Single row ball bearing	1	NTN
12	GB/T894.1-1986 30	轴用弹性挡圈-A 型 Axial elastic baffle ring	1	



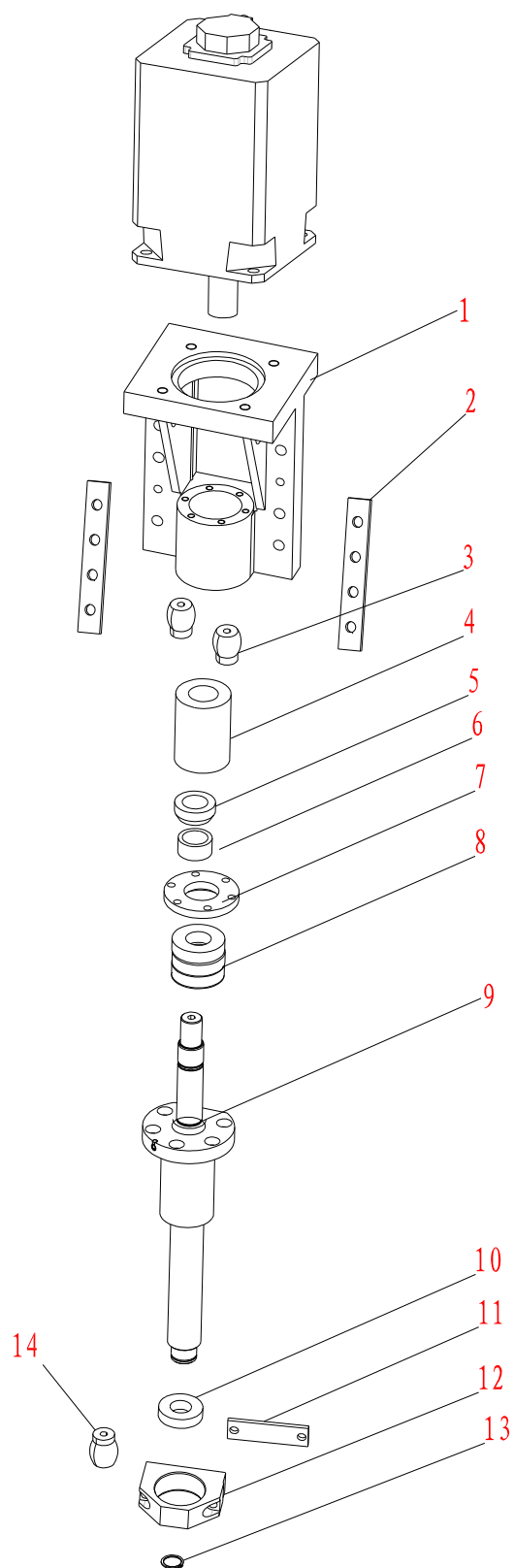
立柱装配图

Column assembly drawing

立柱装配

Column assembly

图上序号 Position No	件号 Part No	名称 Description	数量 Q'ty	备注 Remarks
1	51011B	立柱 column	1	
2	VMC850-54304	链夹 Fixing part of chain	4	
3	GB/T882-1986 B-6X40	销轴 Pivot	4	
4	GB/T91-2000 3.2X16	开口销 Cotter pin	1	
5	51301	直线导轨 Linear guide way	1	
6	RLBL444-115	多板起重链 Hoisting chain	2	
7	VMC850-41301	压块 Hold-down	24	



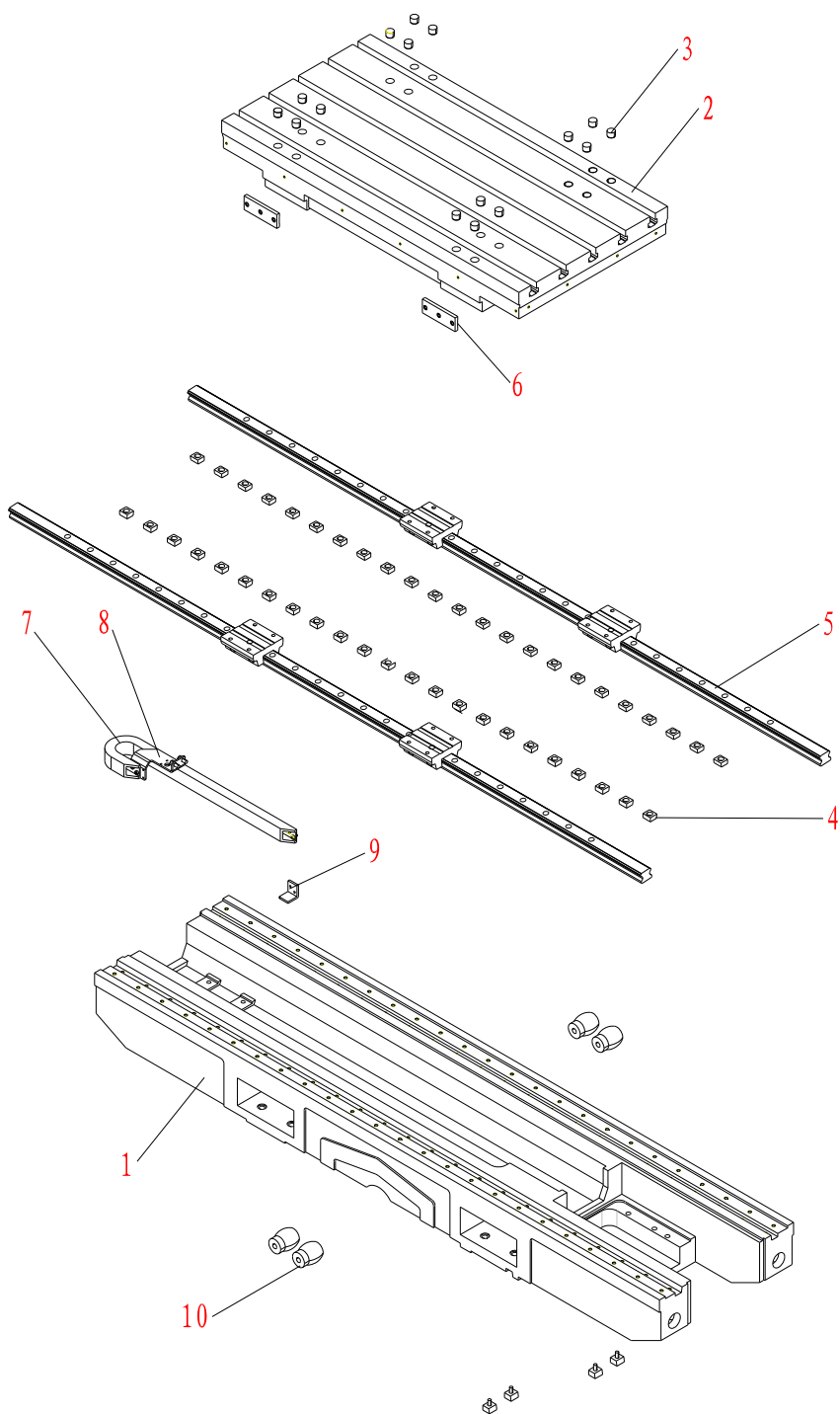
Z 轴拖动装配图

Z axis driven assembly drawing

Z 轴 拖 动 装 配

Z axis driven assembly

图上序号 Position No	件号 Part No	名 称 Description	数 量 Q'ty	备 注 Remarks
1	VMC850E-72011A	电 机 座 Motor seat	1	
2	VMC850E-42304	调整垫 Adjusting pad	2	
3	VMC850E-41902	撞 块 stopper	2	
4	RJ/28/28/90 (D25 -D35)	联 轴 器 coupling	1	
5	SWLN06-M30X1.5	螺 帽 Screw cap	1	YHB
6	VMC850E-42303	套 sleeve	1	
7	VMC850E-42302	压 盖 Gland	1	
8	BST30X62-1BP4	推力球轴承 High precision angular ball bearing	3	NTN
9	52301A	丝 杠 Ball screw	1	PMI
10	6206ZZCM	单列深沟球轴承 Single row ball bearing	1	
11	VMC850-42307	调整垫 Adjusting pad	1	
12	VMC850-42012	轴承座 Bearing seat	1	
13	GB/T894.1-1986 30	轴用弹性挡圈-A型 Axial elastic baffle ring	1	
14	VMC1100-A52901	撞 块 stopper	1	



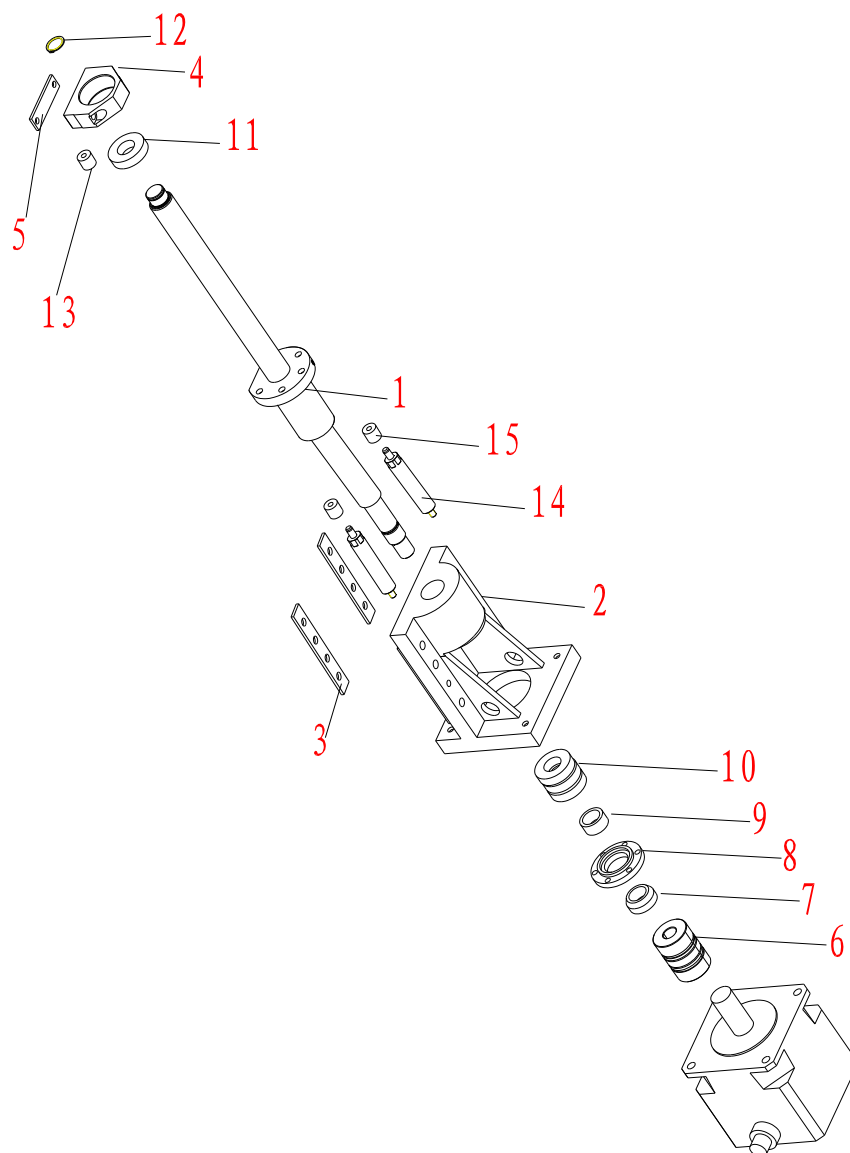
工作台及滑座装配图

Table and slide assembly drawing

工作台及滑座装配

Table and slide assembly

图上序号 Position No	件号 Part No	名称 Description	数量 Q'ty	备注 Remarks
1	341011	滑座 slide	1	
2	VMC850B-341012	工作台 table	1	VMC850B
	VMC1000B-341012	工作台 table	1	VMC1000B
	VMC1100B-341012	工作台 table	1	VMC1100B
3	FCG-20	防尘盖 Dust shield	16	
4	VMC850-41301	压块 Hold-down	50	
5	VMC850B-41301	直线导轨 Linear guideway	1	VMC850B
	VMC1000B-41301	直线导轨 Linear guideway	1	VMC1000B VMC1100B
6	VMC850-41305	压板 Press plate	2	
7	JL15.25R38-1000 (30节)	拖链 Cable carrier	1	
8	84302A	X轴拖链支架2 Holder 2	1	
9	84303B	X轴拖链支架1 Holder 1	1	
10	VMC850E-41901	撞块 stopper	4	



X 轴 拖 动 装 配 图

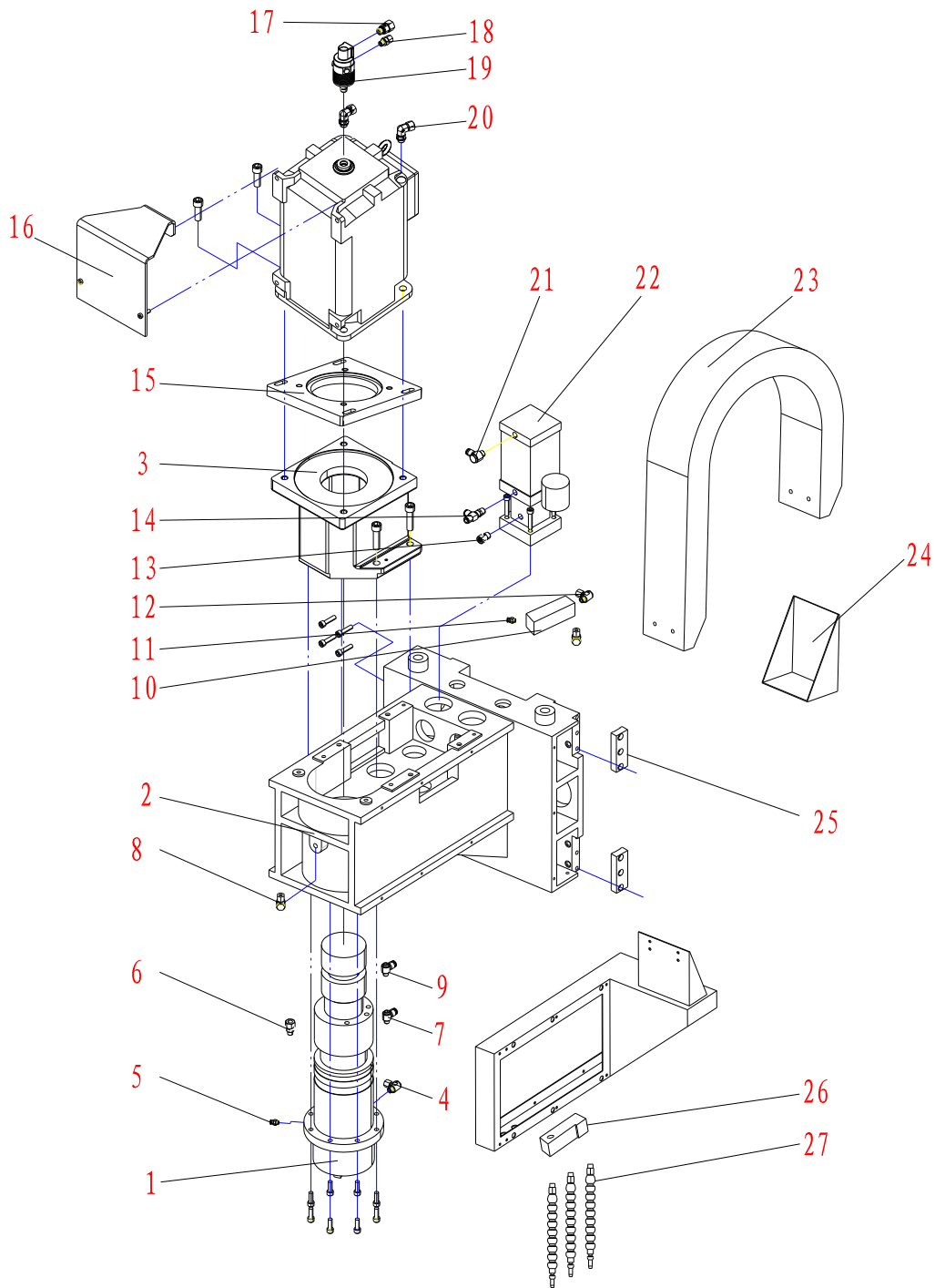
X axis driven assembly drawing

X 轴 拖 动 装 配

X axis driven assembly

图上序号 Position No	件号 Part No	名 称 Description	数 量 Q'ty	备 注 Remarks
1	VMC850B-42301A	丝 杠 Ball screw	1	VMC850B
	VMC1000B-42301A	丝 杠 Ball screw	1	VMC1000B VMC1100B
2	VMC850E-72011A	电 机 座 Motor seat	1	
3	VMC850E-42304	调整垫 Adjusting pad	2	
4	VMC850-42012	轴承座 Bearing seat	1	
5	VMC850-42307	调整垫 Adjusting pad	1	
6	RJ/28/28/90 (D25 -D35)	联 轴 器 coupling	1	
7	SWLN06-M30X1.5	螺 帽 Screw cap	1	YHB
8	VMC850E-42302	压 盖 Gland	1	
9	VMC850E-42303	套 sleeve	1	
10	BST30X62-1BP4	推力球轴承 High precision angular ball bearing	3	NTN
11	6206ZZCM	单列深沟球轴承 Single row ball bearing	1	NTN
12	GB/T894.1-1986 30	轴用弹性挡圈-A型 Axial elastic baffle ring	1	
13	VMC850E-41902	撞 块 stopper	1	

14	VMC850B-342301	撞块座 Stopper seat	2	VMC850B
	VMC1000B-342301	撞块座 Stopper seat	2	VMC1000B
15	VMC850-42901	撞块 stopper	2	VMC850B VMC1000B
	VMC850E-41902	撞块 stopper	2	VMC1100B



主轴箱装配图 (内冷直联)

Spindle box assembly drawing (inner cooling and directly connection)

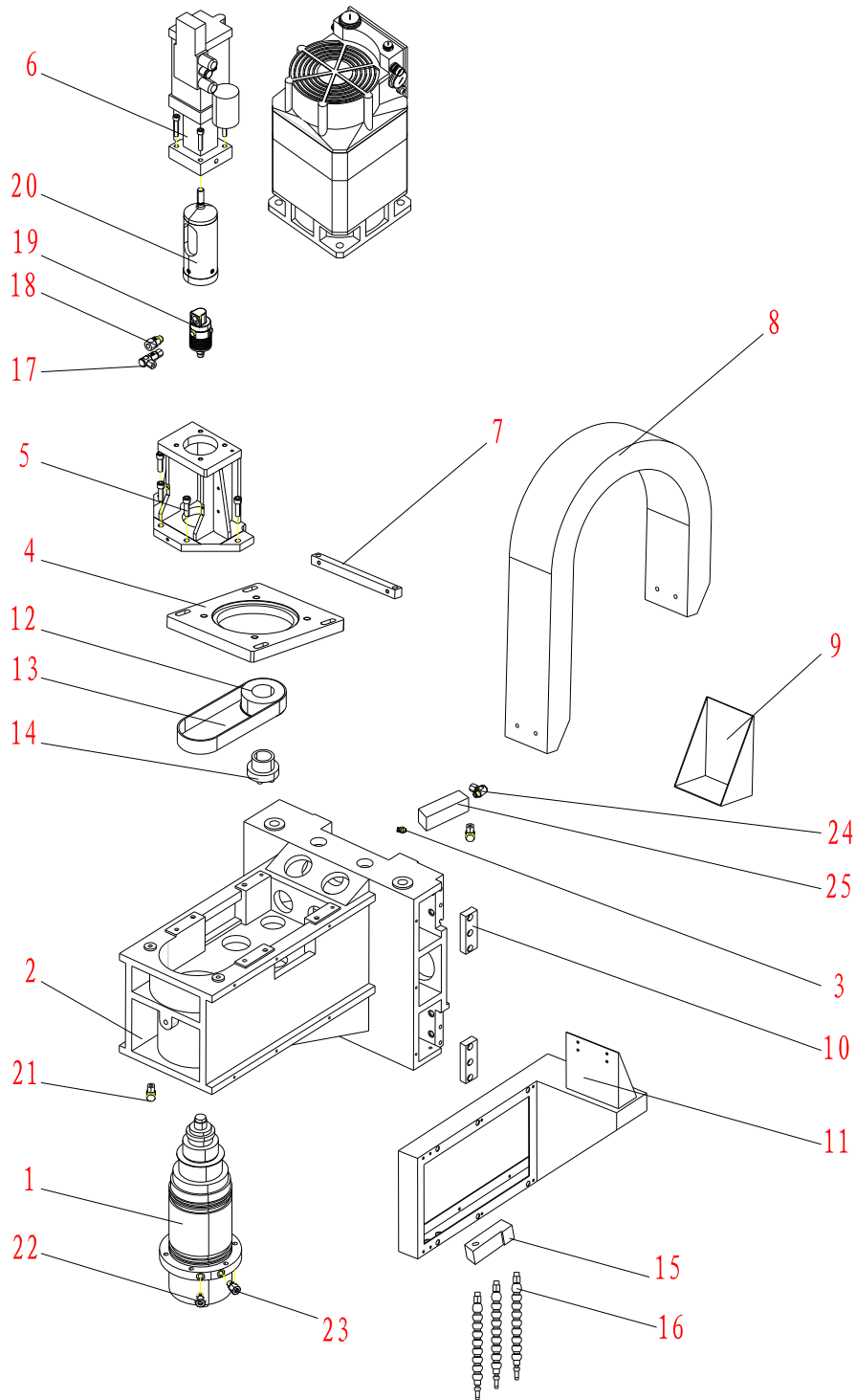
主 轴 箱 装 配 (内冷直联)

Spindle box assembly (inner cooling and directly connection)

图上序号 Position No	件号 Part No	名 称 Description	数 量 Q'ty	备 注 Remarks
1	VMC850-13301	主轴 (12000rpm) Spindle (12000rpm)	1	
	VMC850-313301	主轴 (12000rpm) Spindle (12000rpm)	1	inner cooling
	VMC850-14301	主轴 (15000rpm) Spindle (15000rpm)	1	
	VMC850-314301	主轴 (15000rpm) Spindle (15000rpm)	1	inner cooling
2	13011	主轴箱 Spindle box	1	
3	VMC850-13013	电机座 Motor seat	1	
4	MJL10-8T	直角铰接接头 Right adjusting fitting	1	CKD
5	KQ2L08-01S	弯头 Angle head	1	SMC
6	VMC850-65305	接头 Joint	1	
7	KQ2L08-02S	弯头 Angle head	1	SMC
8	MJL10-8T	直角铰接接头 Right adjustable fitting	1	CKD
9	KQ2L10-02S	弯头 Angle head	1	SMC
10	VR1220-02	梭动阀 Shuttle valve	1	SMC
11	KQH10-02S	直通接头 Straight joint	1	SMC

图上序号 Position No	件号 Part No	名称 Description	数量 Q'ty	备注 Remarks
12	VMC850-161304	接头 Joint	2	
13	VMC850-65305	接头 Joint	1	
14	KQ2Y10-03S	三通弯头 3-way angle head	1	SMC
15	VMC850-13303	法兰盘 Flange plate	1	
16	VMC850-413302	连接板 Connecting plate	1	
17	VMC850-161307	接头 Joint	1	
18	VMC850-161305	接头 Joint	1	
19	902-120-188	旋转接头 Rotating joint	1	DUBOLIN 12000rpm
	1109-120-188	旋转接头 Rotating joint	1	DUBOLIN 15000rpm
20	H10-03S	直通接头 Straight joint	2	SMC
21	KQ2L10-03S	弯头 Angle head	1	SMC
22	W1000-6.25倍 X120CC	增压缸 Boost cylinder	1	
23	JL78F. 075R200 -1467 (22节)	拖链 Cable carrier	1	
24	84304	Z轴拖链支架 Z axis cable carrier Holder	1	
25	VMC850-11306	压块 Hold-down	2	

图上序号 Position No	件号 Part No	名称 Description	数量 Q'ty	备注 Remarks
26	VMC850-61333	分水块 Division piece	1	
27	G3/8" KZ83A 长 200; L31-5	可调塑料冷却管 Adjustable plastic cooling pipe	3	



主轴箱装配图（齿形带传动内冷）

Spindle box assembly drawing (gear belt transmission)

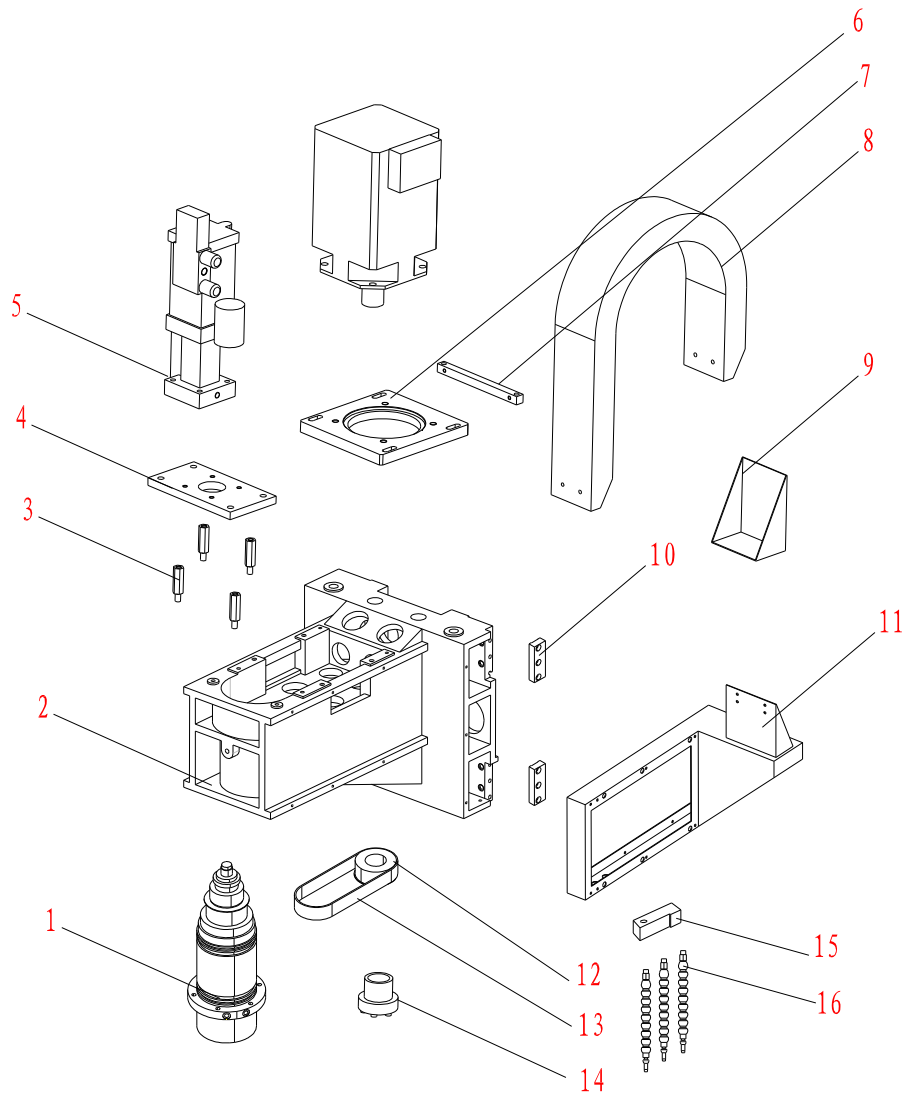
主 轴 箱 装 配 (齿形带传动内冷)

Spindle box assembly (gear belt transmission)

图上序号 Position No	件号 Part No	名 称 Description	数 量 Q'ty	备 注 Remarks
1	VMC850-311301	主轴 (8000rpm) Spindle (8000rpm)	1	BT40
	VMC850-312301	主轴 (10000rpm) Spindle (10000rpm)	1	BT40
	315301	主轴 (6000rpm) Spindle (6000rpm)	1	BT50
2	11011A	主轴箱 Spindle box	1	BT40
	15011A	主轴箱 Spindle box	1	BT50
3	KQH10-02S	直通接头 Straight joint	1	SMC
4	11306	电机连接板 Motor connection board	1	
5	VMC850E-13011	打刀缸座 Tool unclamping cylinder seat	1	BT40
	315303A	打刀缸座 Tool unclamping cylinder seat	1	BT50
6	全配备 G4000-3.5TX13L	增压缸 Boost cylinder	1	BT40
	全配备 G4000-6TX15L	增压缸 Boost cylinder	1	BT50
7	VMC850E-11308	调整块 Set piece	1	
8	JL78F. 075R200 -1467 (22 节)	拖链 Cable carrier	1	

图上序号 Position No	件号 Part No	名称 Description	数量 Q'ty	备注 Remarks
9	84304	Z轴拖链支架 Z axis cable carrier Holder	1	
10	VMC850-11306	压块 Hold-down	2	
11	11302A	机头侧架 Ram head side bearer	1	
12	VMC850-11302	带轮 Belt wheel	1	BT40 8000rpm
	VMC850-12302	带轮 Belt wheel	1	BT40 10000rpm
	15302	带轮 Belt wheel	1	BT50 6000rpm
13	864-8YU-40	齿形带 Gear belt	1	BT40 8000rpm
	775-5GT-40	齿形带 Gear belt	1	BT40 10000rpm
	864-8YU-65	齿形带 Gear belt	1	BT50 6000rpm
14	JB-48X62	涨紧套 Expanded sleeve	1	
15	VMC850-61333	分水块 Division piece	1	
16	G3/8" KZ83A 长 200; L31-5	可调塑料冷却管 Adjustable plastic cooling pipe	3	
17	VMC850-161307	接头 Joint	1	
18	VMC850-161306	接头 Joint	1	
19	902-120-188	旋转接头 Rotating joint	1	DUBOLIN

图上序号 Position No	件号 Part No	名称 Description	数量 Q'ty	备注 Remarks
20	VMC850-311302	卸刀杆 Tool unclamping bar	1	BT40
	315302	卸刀杆 Tool unclamping bar	1	BT50
21	MJL10-8T	直角铰接接头 Right adjusting fitting	1	CKD
22	MJL10-8T	直角铰接接头 Right adjusting fitting	1	CKD
23	KQ2L08-01S	弯头 Angle head	1	SMC
24	VMC850-161304	接头 Joint	2	
25	VR1220-02	梭动阀 Shuttle valve	1	10 Bar inner cooling
	VMC850-261303	分配块 Distribution piece	1	20 Bar inner cooling



主轴箱装配图（齿形带传动）

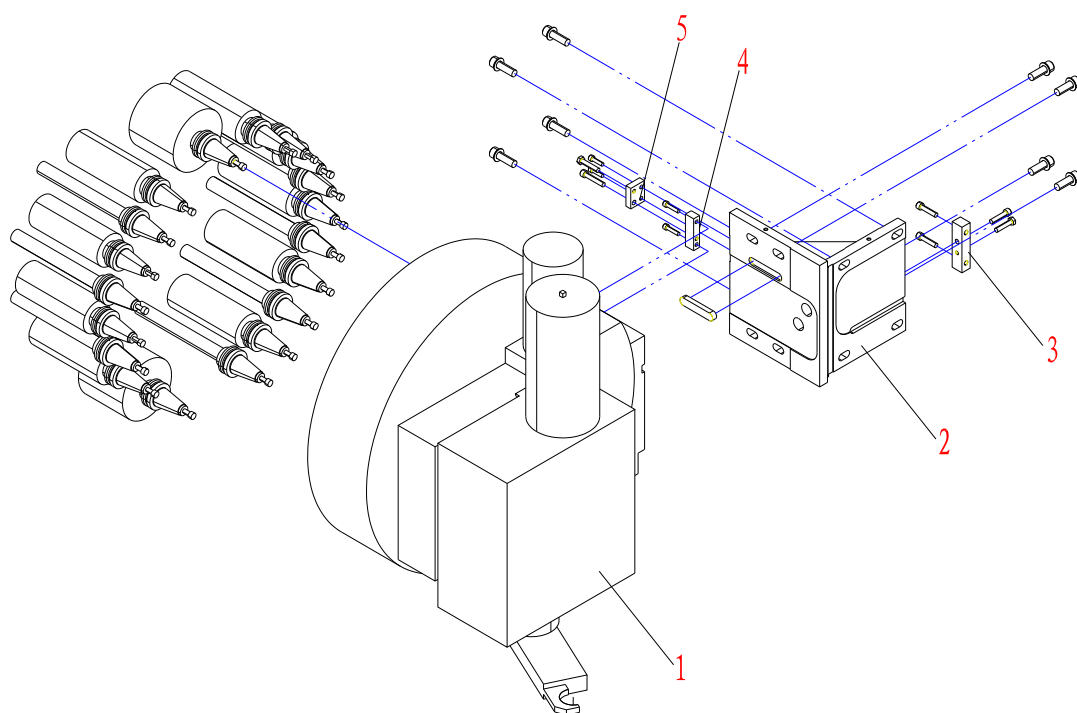
Spindle box assembly drawing (gear belt transmission)

主 轴 箱 装 配 (齿形带传动)

Spindle box assembly (gear belt transmission)

图上序号 Position No	件号 Part No	名 称 Description	数 量 Q'ty	备 注 Remarks
1	VMC850-11301	主轴(8000rpm) Spindle (8000rpm)	1	BT40
	VMC850-12301	主轴(10000rpm) Spindle (10000rpm)	1	BT40
	15301	主轴(6000rpm) Spindle (6000rpm)	1	BT50
2	11011A	主轴箱 Spindle box	1	BT40
	15011A	主轴箱 Spindle box	1	BT50
3	VMC850E-11304A	杆 Post	4	BT40
	15303A	杆 Post	4	BT50
4	VMC850E-11305	气缸座 cylinder seat	1	
5	全配备 G4000-3.5TX13L	增压缸 Boost cylinder	1	BT40
	全配备 G4000-6.0TX15L	增压缸 Boost cylinder	1	BT50
6	11306	电机连接板 Motor connection board	1	
7	VMC850E-11308	调整块 Set piece	1	
8	JL78F. 075R200 -1467(22节)	拖链 Cable carrier	1	
9	84304	Z轴拖链支架 Z axis cable carrier Holder	1	

图上序号 Position No	件号 Part No	名称 Description	数量 Q'ty	备注 Remarks
10	VMC850-11306	压块 Hold-down	2	
11	11302A	机头侧架 Ram head side bearer	1	
12	VMC850-11302	带轮 Belt wheel	1	BT40 8000rpm
	VMC850-12302	带轮 Belt wheel	1	BT40 10000rpm
	15302	带轮 Belt wheel	1	BT50 6000rpm
13	864-8YU-40	齿形带 Gear belt	1	BT40 8000rpm
	775-5GT-40	齿形带 Gear belt	1	BT40 10000rpm
	864-8YU-65	齿形带 Gear belt	1	BT50 6000rpm
14	JB-48X62	涨紧套 Expanded sleeve	1	
15	VMC850-61333	分水块 Division piece	1	
16	G3/8" KZ83A 长 200; L31-5	可调塑料冷却管 Adjustable plastic cooling pipe	3	

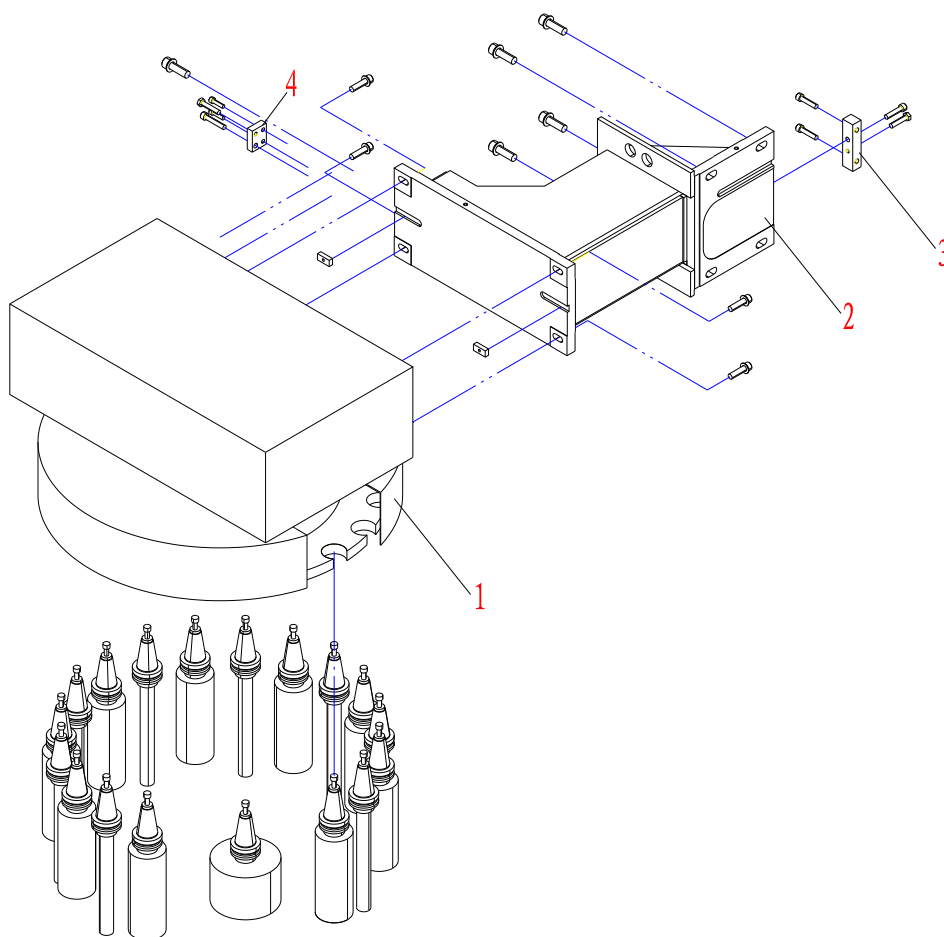


刀库装配图（机械手式）

Tool magazine assembly drawing (ATC)

刀库装配（机械手式）
Tool magazine assembly (ATC)

图上序号 Position No	件号 Part No	名称 Description	数量 Q'ty	备注 Remarks
1	VMC850-22301	刀库 Tool magazine	1	BT40, 24
	VMC850-122301	刀库 Tool magazine	1	BT40, 24 inner cooling
	VMC1100-24301	刀库 Tool magazine		BT50, 20
2	VMC850-22011A	刀库支架 Tool magazine bracket	1	BT40, 24
	124301	刀库支架 Tool magazine bracket	1	BT50, 20
3	VMC850-21303A	调整块 Adjusting block	1	BT40, 24
4	VMC850-22304	调整块 Adjusting block	1	
5	VMC850-22303	调整块 Adjusting block	1	BT40, 24
	VMC1100-22302	调整块 Adjusting block	1	BT50, 20



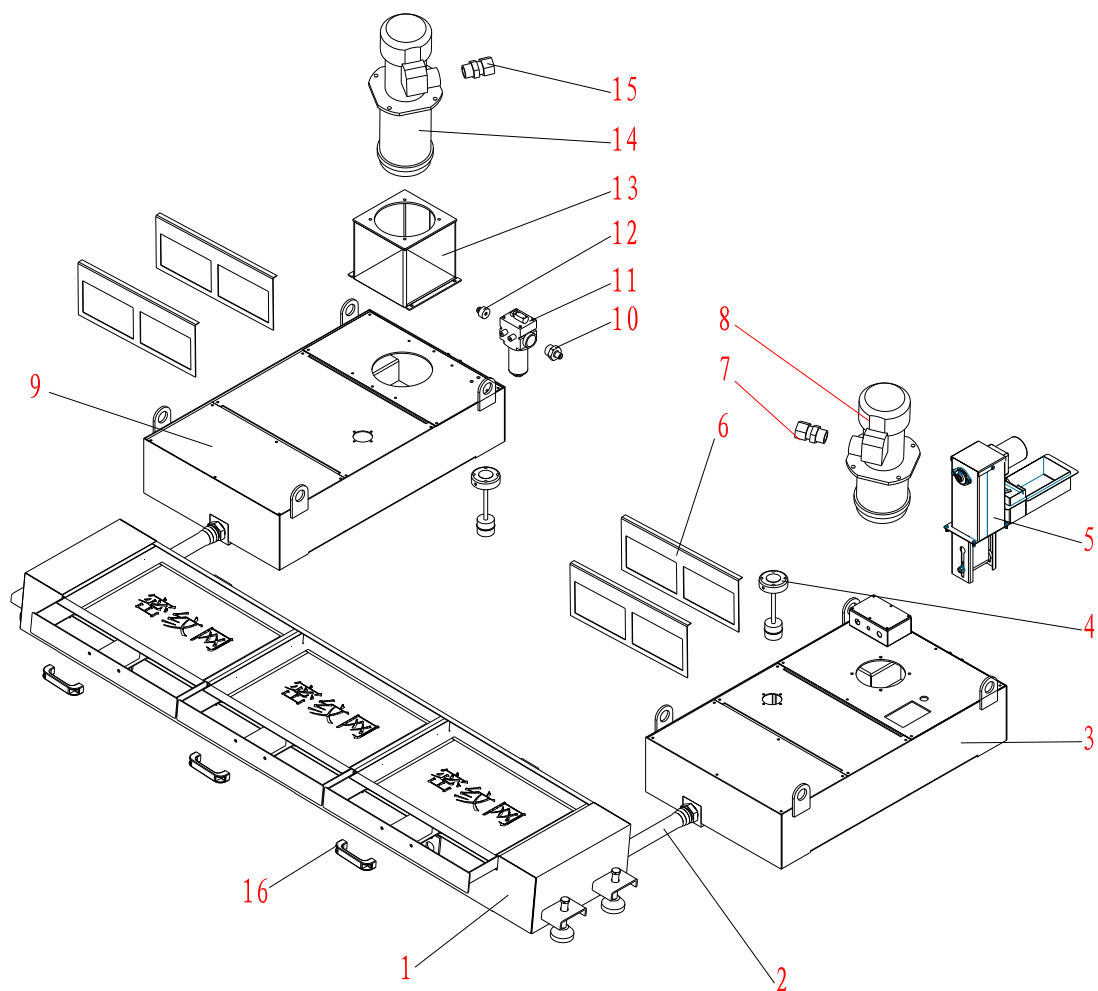
刀库装配图（斗笠式）

Tool magazine assembly drawing (armless)

刀库装配(斗笠式)

Tool magazine assembly (armless)

图上序号 Position No	件号 Part No	名称 Description	数量 Q'ty	备注 Remarks
1	VMC850-21301	刀库 Tool magazine	1	BT40, 20
	VMC1100-23301	刀库 Tool magazine	1	BT50, 16
	VMC1100-25301	刀库 Tool magazine	1	BT50, 20
2	VMC850-21011A	刀库支架 Tool magazine bracket	1	BT40, 20
	123301	刀库支架 Tool magazine bracket	1	BT50, 16
	125301	刀库支架 Tool magazine bracket	1	BT50, 20
3	VMC850-21303A	调整块 Adjusting block	1	
4	VMC850-21304	调整块 Adjusting block	1	



水箱冷却系统装配图

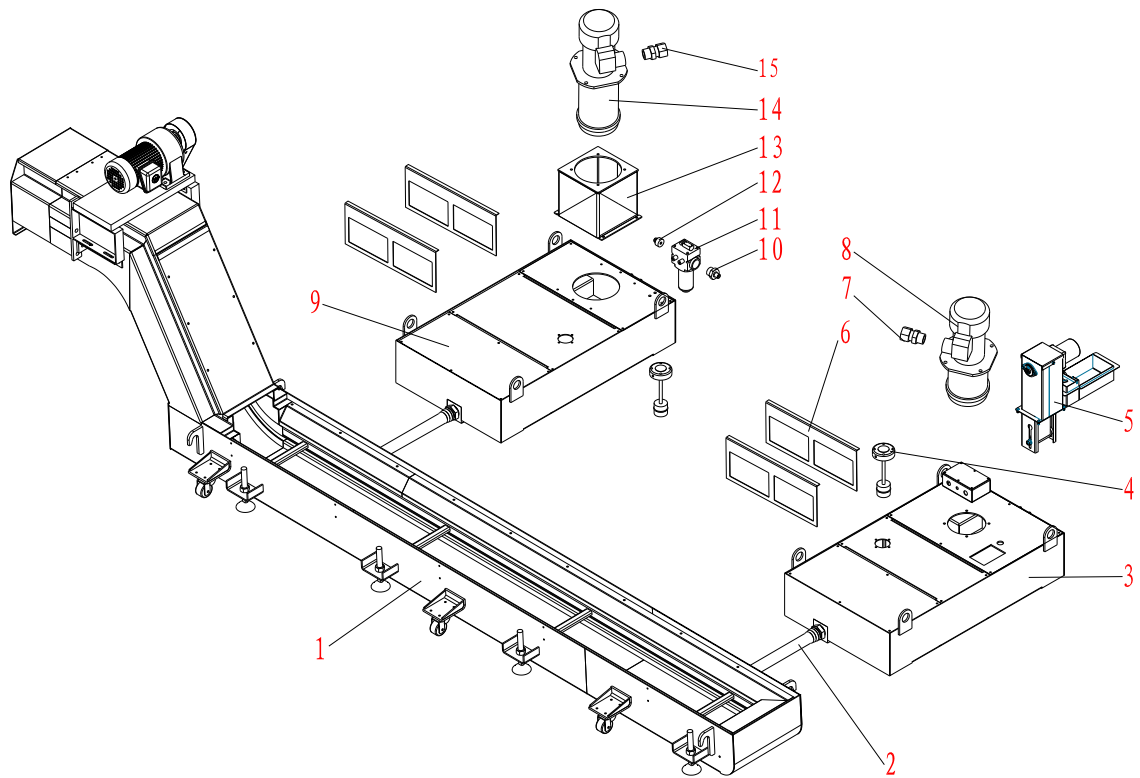
Water tank cooling system assembly drawing

水箱冷却系统装配

Water tank cooling system assembly

图上序号 Position No	件号 Part No	名称 Description	数量 Q'ty	备注 Remarks
1	161331	水箱 Tank	1	
2		管 pipe	1	
3	VMC850-61332	冷却水箱 Cooling tank	1	
4		低液位报警 liquid level alarm	2	
5		油水分离器 Oil and water separator	1	
6	80目	插拔式过滤网 Knock-down screen	4	
7	VMC850E-61301	管接头 pipe connection	1	
8	HCP-900MSF	冷却泵 Cooling pump	1	
9	VMC850-261331	冷却水箱 Cooling tank	1	inner cooling
10	VMC850-261335	变径接头 Reducer union	1	inner cooling
11	PLFBH-C110X20WP	压力管路过滤器 Pressure filter	1	inner cooling
12	VMC850-261334	变径接头 Reducer union	1	inner cooling
13	VMC850-261332	水泵座 Water pump seat	1	20 Bar inner cooling

图上序号 Position No	件号 Part No	名称 Description	数量 Q'ty	备注 Remarks
14	HCP-4000HMF280- C	冷却泵 Cooling pump	1	20 Bar inner cooling
15	1DB-24-12WD/RN	变径接头 Reducer union	1	inner cooling
16		把手 gripe	3	



链式排屑器冷却系统装配图

Chain conveyor cooling system assembly drawing

链式排屑器冷却系统装配

Chain conveyor cooling system assembly

图上序号 Position No	件号 Part No	名称 Description	数量 Q'ty	备注 Remarks
1	162331	链式排屑器 Chain chip conveyor	1	
2		管 Pipe	1	
3	VMC850-61332	冷却水箱 Cooling pump	1	
4		低液位报警 liquid level alarm	2	
5		油水分离器 Oil and water separator	1	
6	80目	插拔式过滤网 Knock-down screen	4	
7	VMC850E-61301	管接头 pipe connection	1	
8	HCP-900MSF	冷却泵 Cooling pump	1	
9	VMC850-261331	冷却水箱 Cooling tank	1	inner cooling
10	VMC850-261335	变径接头 Reducer union	1	inner cooling
11	PLFBH-C110X20WP	压力管路过滤器 Pressure filter	1	inner cooling
12	VMC850-261334	变径接头 Reducer union	1	inner cooling
13	VMC850-261332	水泵座 Water pump seat	1	20 Bar inner cooling